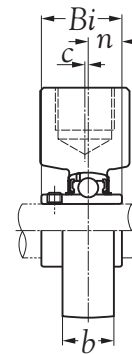
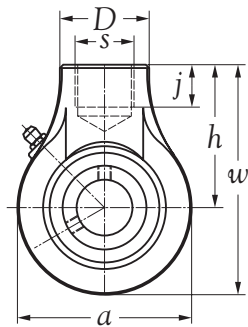


Shaft dia. mm inch	Unit number	Nominal dimensions										Bearing number	Housing number	Mass of unit Kg
		mm inch												
		a	w	c	b	h	s	D	j	Bi	n			
12 1/2	UCHA 201	64	96.0	0	22	64	RP 3/4	40	19	31.0	12.7	UC 201	HA 204	0.66
	UCHA 201-8	2-3/64	3-25/32	0	55/64	2-3/64	RP 3/4	1-37/64	3/4	1.2205	0.5000	UC 201-8		0.66
15 5/8	UCHA 202	64	96.0	0	22	64	RP 3/4	40	19	31.0	12.7	UC 202	HA 204	0.65
	UCHA 202-10	2-3/64	3-25/32	0	55/64	2-3/64	RP 3/4	1-37/64	3/4	1.2205	0.5000	UC 202-10		0.65
17 11/16	UCHA 203	64	96.0	0	22	64	RP 3/4	40	19	31.0	12.7	UC 203	HA 204	0.64
	UCHA 203-11	2-3/64	3-25/32	0	55/64	2-3/64	RP 3/4	1-37/64	3/4	1.2205	0.5000	UC 203-11		0.64
20 3/4	UCHA 204	64	96.0	0	22	64	RP 3/4	40	19	31.0	12.7	UC 204	HA 204	0.62
	UCHA 204-12	2-3/64	3-25/32	0	55/64	2-3/64	RP 3/4	1-37/64	3/4	1.2205	0.5000	UC 204-12		0.63
25 1	UCHA 205	78	103.0	0	23	64	RP 3/4	40	19	34.1	14.3	UC 205	HA 205	0.83
	UCHA 205-16	3-5/64	4-1/16	0	29/32	2-3/64	RP 3/4	1-37/64	3/4	1.3425	0.5630	UC 205-16		0.82
30 1-1/8 1-1/4	UCHA 206	78	103.0	0	25	64	RP 3/4	40	19	38.1	15.9	UC 206	HA 206	0.78
	UCHA 206-18											UC 206-18		0.80
	UCHA 206-20	3-5/64	4-1/16	0	63/64	2-3/64	RP 3/4	1-37/64	3/4	1.5000	0.6260	UC 206-20		0.76
35 1-1/4 1-3/8	UCHA 207	92	116.0	0	26	70	RP 3/4	40	19	42.9	17.5	UC 207	HA 207	1.11
	UCHA 207-20											UC 207-20		1.17
	UCHA 207-22	3-5/8	4-9/16	0	1-1/64	2-3/4	RP 3/4	1-37/64	3/4	1.6890	0.6890	UC 207-22		1.12
40 1-1/2	UCHA 208	96	121.0	2.0	30	73	RP 3/4	40	19	49.2	19.0	UC 208	HA 208	1.25
	UCHA 208-24	3-25/32	4-49/64	5/64	1-3/16	2-7/8	RP 3/4	1-37/64	3/4	1.9370	0.7480	UC 208-24		1.29
45 1-5/8 1-3/4	UCHA 209	108	136.0	5.0	30	82	RP 1	48	21	49.2	19.0	UC 209	HA 209	1.65
	UCHA 209-26											UC 209-26		1.75
	UCHA 209-28	4-1/4	5-23/64	13/64	1-3/16	3-15/64	RP 1	1-57/64	53/64	1.9370	0.7480	UC 209-28		1.67
50 1-7/8	UCHA 210	115	140.5	5.0	32	83	RP 1	48	21	51.6	19.0	UC 210	HA 210	1.95
	UCHA 210-30	4-17/32	5-17/32	13/64	1-17/64	3-17/64	RP 1	1-57/64	53/64	2.0315	0.7480	UC 210-30		2.02
55 2	UCHA 211	126	150.0	7.0	33	87	RP 1-1/4	60	24	55.6	22.2	UC 211	HA 211	2.48
	UCHA 211-32	4-61/64	5-29/32	9/32	1-19/64	3-27/64	RP 1-1/4	2-23/64	15/16	2.1890	0.874	UC 211-32		2.63
60 2-1/4	UCHA 212	142	173.0	9.0	36	102	RP 1-1/4	60	28	65.1	25.4	UC 212	HA 212	3.59
	UCHA 212-36	5-19/32	6-13/16	23/64	1-27/64	4-1/64	RP 1-1/4	2-23/64	1-7/64	2.5630	1.0000	UC 212-36		3.73
65 2-1/2	UCHA 213	166	200.0	9.5	38	117	RP 1-1/2	70	32	65.1	25.4	UC 213	HA 213	5.37
	UCHA 213-40	6-17/32	7-7/8	3/8	1-1/2	4-39/64	RP 1-1/2	2-3/4	1-17/64	2.5630	1.0000	UC 213-40		5.45
70 2-3/4	UCHA 214	166	200.0	9.5	40	117	RP 1-1/2	70	32	74.6	30.2	UC 214	HA 214	5.47
	UCHA 214-44	6-17/32	7-7/8	3/8	1-37/64	4-39/64	RP 1-1/2	2-3/4	1-17/64	2.9370	1.1890	UC 214-44		5.48

Remark: 1) Regular production in "J" tolerance.
 2) Bearing unit with grease holes and grease groove.
 3) Bearing unit without stop pin.



Shaft dia. mm inch	Unit number	Nominal dimensions										Bearing number	Housing number	Mass of unit Kg
		a	w	c	b	h	s	D	j	Bi	n			
75	UCHA 215	166	200.0	9.5	40	117	RP 1-1/2	70	32	77.8	33.3	UC 215	HA 215	5.11
3	UCHA 215-48	6-17/32	7-7/8	3/8	1-37/64	4-39/64	RP 1-1/2	2-3/4	1-17/64	3.0630	1.3110	UC 215-48		5.03

- Remark: 1) Regular production in "J" tolerance.
 2) Bearing unit with grease holes and grease groove.
 3) Bearing unit without stop pin.